



UNIVERSITY PARK PRESS

International Publishers in Science, Medicine, and Education

300 NORTH CHARLES STREET

BALTIMORE, MARYLAND 21201

*Beverly
Lapp*

Recd. 8/16

August 12, 1982

Mr. Andy L. Trohanis
Chief, Instructional Media Resources
Maryland Institute for Emergency
Medical Services
22 South Greene Street
Baltimore, Maryland 21201

Dear Andy:

Enclosed is a copy of Dr. Ben Eiseman's review of the SHOCK TRAUMA/
CRITICAL CARE MANUAL, which I promised to send along to you. As
you will note, the review will be published in a forthcoming issue
of the "Archives of Surgery". We are delighted with Dr. Eiseman's
review, since he is known as being a "straight shooting" and demanding
task master!

I look forward to our continuing exchanges and to having the opportunity
to work with you and your staff in the development and marketing of
MIEMSS' educational A.V. materials.

With kindest personal regards.

Sincerely yours,

Ruby

RUBY RICHARDSON
Senior Editor

RR:dml
Enclosure

University of Colorado Health Sciences Center



University Hospitals
School of Medicine
School of Nursing
School of Dentistry

4200 East Ninth Avenue
Denver, Colorado 80262

June 28, 1982

University Park Press
300 North Charles Street
Baltimore, Maryland 21201

Dear Sirs:

Enclosed is a copy of a review that is being published in the Archives of Surgery. I appreciate your sending me this book.

Sincerely,

A handwritten signature in cursive script that reads "Ben Eiseman".

Ben Eiseman, M.D.
Professor of Surgery
Department of Surgery
Review Book Editor
Archives of Surgery

BE:jn
Enclosure

SHOCK TRAUMA/CRITICAL CARE MANUAL
R. Adams Cowley, M.D. and C. Michael Dunham, M.D.
University Park Press, Baltimore, Maryland
1982, \$49.95.

The many current books on trauma vary from esoterica to stark pragmatism and there is a place for both. The ones that fail--like most compromises try to satisfy everyone. Adams Cowley's new book does not make this mistake. It is admittedly, purposely and solely a manual. It is the distillate or residue boiled free of froth of what the physician should do in the Emergency Room and in the early care of the seriously injured. It is an itemized text lean and hard. As such it is scarcely bedside reading but predictably will be a standard item for physicians both in trauma centers and in hospitals where only occasionally they care for the severely injured. Its bold type and its few no nonsense diagrams are all designed for such use.

Behind this primer is an enormous clinical and administrative experience. The Maryland Institute for Emergency Medical Service Systems habitually uses trauma fellows of wide background and this manual undoubtedly has been accumulating over the years to indoctrinate these surgeons into the accepted practice in that trauma center. Although the directions and syntax are simple there is both scientific and clinical sophistication beneath the surface. For example the many references to cardiac and peripheral vascular dynamics and blood gas studies are well thought out.

Items of special value in this book are:

- The practical monitoring diagrams and flow sheets for various types of injuries.
- The administrative and financial structure of a trauma unit. Dr. Cowley gives us a peek at the wizardry of how he has built, managed and financed his Maryland trauma empire. It is hegemony at its best!
- A superb, very short, practical yet sensitive section on how to tell the family that their son has died from injury.

- A short section on ER techniques in handling the injured. Oddly abdominal paracentesis is placed elsewhere in the text.
- A big section on drugs as they relate to trauma.

Surgical specialties such as orthopedics will find that this book gives their specialties rather short shrift even in first aid management as compared to the detailed instructions for what to do with specific abdominal injuries. But true to the objective of this manual most of the emergency maneuvers in diagnosis and initial care of extremity injuries are included.

Emergency Room physicians and others occasionally working in the ER will find this an extremely valuable reference manual. One can picture this big, durable, hard cover book chained to the ER desk for quick and ready reference in most hospitals.

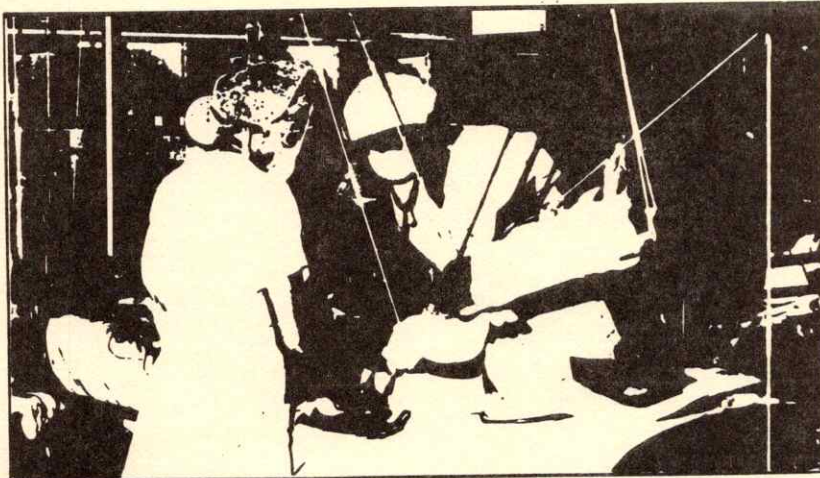


Ben Eiseman, M.D.
Professor of Surgery
Department of Surgery
University of Colorado Health
Sciences Center
4200 East Ninth Avenue
Denver, Colorado 80262

SHOCK TRAUMA/CRITICAL CARE MANUAL

Initial Assessment and Management

Edited by R Adams Cowley, M.D. and
C. Michael Dunham, M.D.



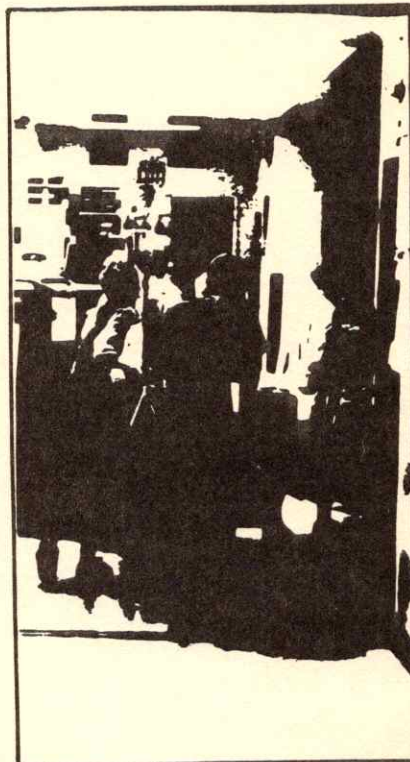
"... this manual will assist in minimizing death, morbidity and permanent disability and provide useful guidance in the clinical management of the severely traumatized or critically ill patient."

(from the Preface)

This superb manual provides you with effective and tested guidelines for stabilization and clinical management of trauma victims and critically ill patients. The material is presented in a highly practical manner—written as though the patient is lying in front of you. Emphasis is placed on priorities and procedures for prompt therapeutic intervention in stabilizing the patient and on diagnosis and treatment of injuries... all in step-by-step fashion. The authors also include advice on the continuing critical care of severely injured and ill patients. The manual is based on the protocol and the seasoned experience of the director and staff at Maryland's Shock Trauma Center (Maryland Institute for Emergency Medical Services Systems).

In preparation

Price not set



CONTENTS

- Initial Evaluation and Management of the Trauma Patient
- Shock
- Systems Injury
- Special Considerations
- Organ Systems Failure
- Infection
- Nutrition
- Principles, Techniques and Procedures
- Monitoring
- Hyperbaric Medicine
- Death and Dying
- Protocols
- Appendix
- Index

University Park Press

International Publishers in Science, Medicine, and Education

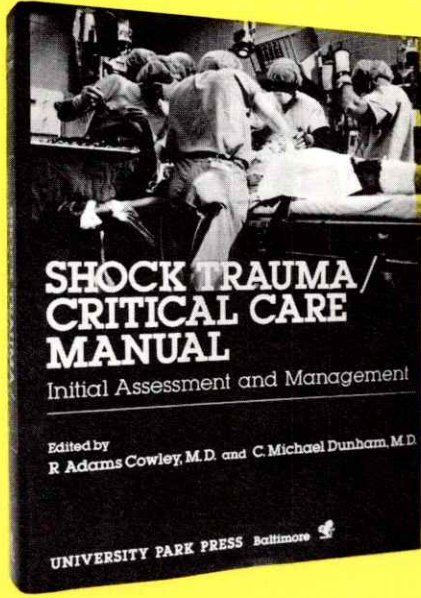
300 North Charles Street
Baltimore, Maryland 21201



For further information
Call Toll Free
800-638-7511

In Maryland call
(301) 547-0700

University Park Press Introduces...



SHOCK TRAUMA/ CRITICAL CARE MANUAL Initial Assessment and Management

Edited by **R Adams Cowley, M.D.**
and **C. Michael Dunham, M.D.**

This superb new manual gives you tested and proven guidelines for the stabilization and clinical management of trauma victims and critically ill patients. Based on the protocols of the director and staff of Maryland's respected Shock Trauma Center, this manual presents you with life-saving knowledge and techniques in a highly readable and practical manner.

The book emphasizes instructions and techniques for prompt therapeutic intervention... guiding you step-by-step, as if the patient were lying right in front of you.

Valuable knowledge and procedures are given on:

- Initial evaluation and management
- Shock
- Organ systems failure
- Multiple systems injury
- Burns
- Infection
- Nutritional support
- Hyperbaric medicine
- Tracheal intubation
- Monitoring

616 pages Illustrated Large Format Hardcover 1982 Stock No. 15687 ISBN 0-8391-1712-4 \$49.95

*Order today, or ask us about the forthcoming
Special, Autographed Deluxe Edition*

OUR GUARANTEE
You may return any book or item within 15 days for a full refund.
(Please include invoice with return)

Yes! Please send me the books listed below.

COWEAB/042

- I'm interested in the Special Autographed Deluxe Edition.
Please send me information on this special collector's edition.
- | | |
|-------------|--|
| _____ 15687 | SHOCK TRAUMA/CRITICAL CARE MANUAL @\$49.95 |
| _____ 16616 | CODE PINK @\$16.95 |
| _____ 19216 | INTENSIVE CARE @\$39.95 |

Quantity

(Prices are subject to change without notice).

Total _____

Name _____
Address _____
Institution _____
City _____
State _____ Zip Code _____
Phone () _____

- Bill me. I will pay postage and handling charges.
 I am enclosing a check or charging to my credit card.
As a bonus for prepayment, the publisher will pay shipping.
- VISA MasterCard American Express
Account No. _____ Exp. _____
Signature _____

UNIVERSITY PARK PRESS
International Publishers in Science, Medicine, and Education
300 North Charles Street
Baltimore, Maryland 21201

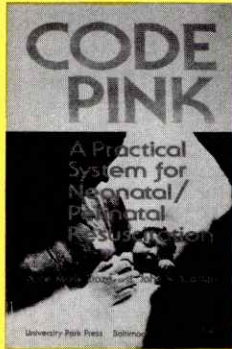


CALL TOLL FREE
800-638-7511

In Maryland call (301) 547-0700

Also of interest...

Practical, life-saving knowledge...



CODE PINK: A Practical System for Neonatal/ Perinatal Resuscitation

Edited by **Anne Marie Daze, R.N., B.S.N.**
and **John W. Scanlon, M.D.**

CODE PINK shows you how you can successfully manage obstetric emergencies and gives you the practical knowledge needed to deal with the asphyxiated newborn child.

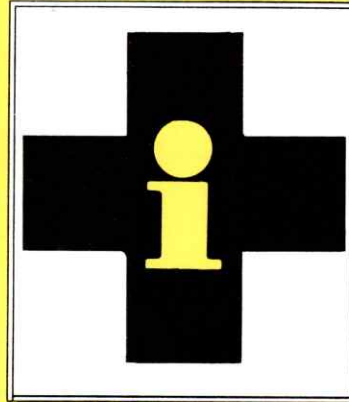
It is a primer for everyone who needs quick entry into the practical aspects of neonatal resuscitation... it's a system that will work for you.

It covers both pediatric and obstetric aspects, clearly explaining the theoretical background on which the practical and technical skills are based.

CODE PINK shows you how to practice the technical skills you will need, emphasizing a team approach.

192 pages Illustrated Paperback 1981
Stock No. 16616 ISBN 0-8391-1670-5 \$16.95

Increase your professional skills...



INTENSIVE CARE

Edited by **Eric Sherwood Jones, M.D.**

A new addition to the literature of intensive care, written for doctors from several specialties, qualified nurses, physiotherapists, and technicians who are part of the therapeutic team in the Intensive Care Unit.

The book's aim is to help members of the team to perform the observations and treatment that are required and to learn something of the conditions most commonly seen as well as the underlying pathophysiology.

Eric Sherwood Jones has compiled a textbook that will be of relevance and assistance to a wide group of physicians and specialist nursing personnel.

400 pages Illustrated Hardcover 1982
Stock No. 19216 ISBN 0-8391-1741-8 \$39.95

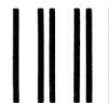
UNIVERSITY PARK PRESS

International Publishers in Science, Medicine, and Education
300 North Charles Street
Baltimore, Maryland 21201



**CALL TOLL FREE
800-638-7511**

In Maryland call (301) 547-0700



**NO POSTAGE
NECESSARY
IF MAILED
IN THE
UNITED STATES**

BUSINESS REPLY MAIL

FIRST CLASS PERMIT NO. 16715 Baltimore, MD

POSTAGE WILL BE PAID BY ADDRESSEE

UNIVERSITY PARK PRESS

300 North Charles Street
Baltimore, Maryland 21201

